

Client



Source



Sleep (Bergamot, Lavandin, Clary Sage, Roman Chamomile, Valerian Root) SLP111901

Sample

Sleep Sleep (Bergamot, Lavandin, Clary Sage, Roman Chamomile, Valerian Root)

Batch #:..... SLP111901
 Type:..... Essential Oil Blend
 CAS Number:...

My Daily Choice

Client



Website

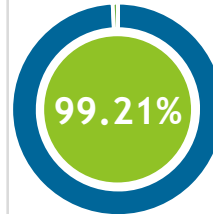
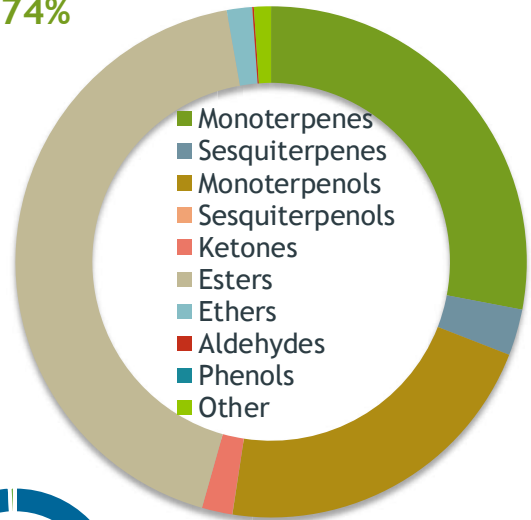


Primary

36.61% | Linalyl acetate
19.55 | Linalool
16.29% | Limonene

Esters

42.74%



Percentage Identified

Result



Conclusion

No adulterants, diluents, or contaminants were detected via this method. This oil meets the expected profile for genuine Essential Oil Blend of Sleep ()

Internal Number: | EVS-3856



Essential Validation Services

747 SW 2nd Ave IMB 12 Suite 306
 Gainesville, FL 32601

317.361.5044 |
<https://essentialvalidationservices.com/>

Alan Chastain

Monoterpenes	27.91%	27.91%
Sesquiterpenes	2.93%	2.93%
Monoterpenols	21.44%	21.44%
Sesquiterpenols	0.01%	0.01%
Ketones	1.91%	1.91%
Esters	42.74%	42.74%
Ethers	1.59%	1.59%
Aldehydes	0.11%	0.11%
Phenols	0.00%	0.00%
Other	1.07%	1.07%