

Refractive Index: 1.4673 @ 25C
Density: 0.869 @ 23C

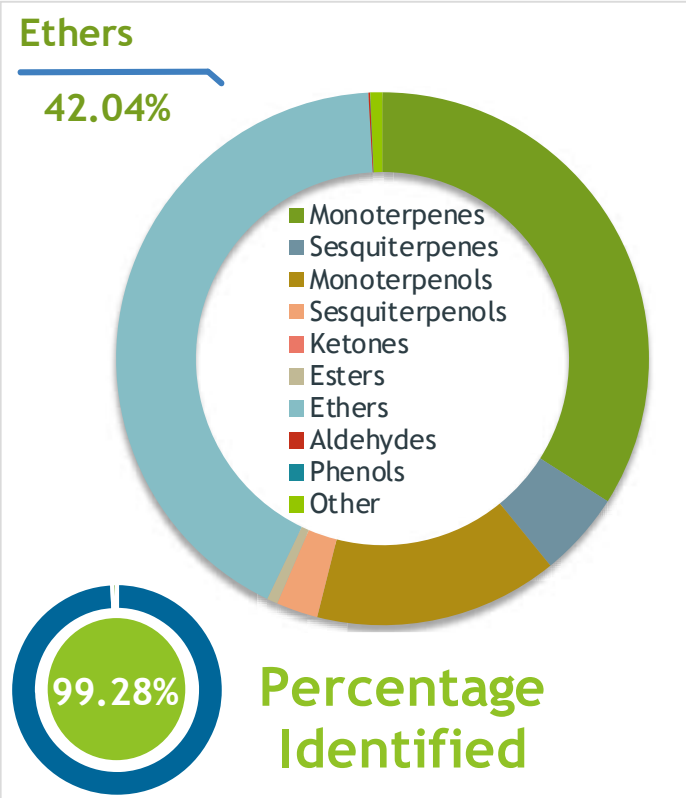
Breathe (Ravintsara, Frankincense, Niaouli, Eucalyptus, Tea Tree)
BRE091901

Client **mydaily choice** Source

Sample Breathe (Ravintsara, Batch #:..... BRE091901 Type:..... Essential Oil CAS Number:.... My Daily Choice

Client **mydaily choice** Website 

Primary **41.89%** | 1,8-Cineole
12.68% | alpha-Pinene
7.19% | alpha-Terpineol



Result **APPROVED**

Conclusion **No adulterants, Diluents, or contaminants were detected via this method. This oil meets the expected profile for genuine Essential Oil of Breathe (Ravintsara, Frankincense, Niaouli, Eucalyptus, Tea Tree)**
Internal Number: | EVS-3315


Essential Validation Services
747 SW 2nd Ave IMB 12 Suite 306
Gainesville, FL 32601
317.361.5044 | <https://essentialvalidationservices.com/>
adam@essentialvalidationservices.com
Adam Christen

Monoterpenes	33.99%	33.99%
Sesquiterpenes	5.17%	5.17%
Monoterpenols	14.78%	14.78%
Sesquiterpenols	2.53%	2.53%
Ketones	0.00%	0.00%
Esters	0.65%	0.65%
Ethers	42.04%	42.04%
Aldehydes	0.08%	0.08%
Phenols	0.02%	0.02%
Other	0.74%	0.74%

ESSENTIAL VALIDATION SERVICES | 747 SW 2ND AVE GAINESVILLE, FLORIDA 32601 | 317-361-5044