

Refractive Index: 1.4708 @ 25C
Density: 0.850 @ 23C

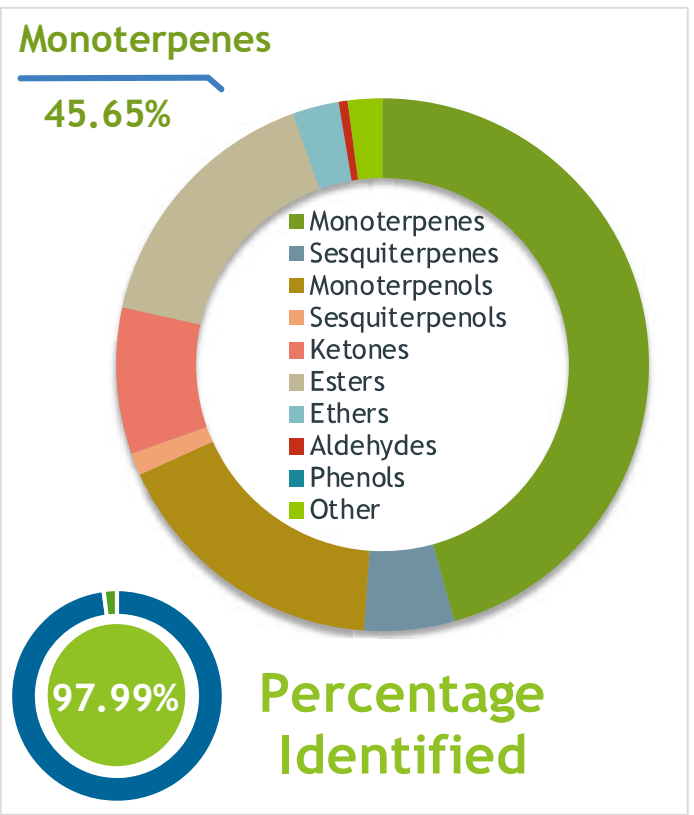
Relax (Grapefruit, Rosemary, Geranium, Lavender, Frankincense)
REL091901

Client **mydaily choice** Source

Sample **Relax**
Batch #:..... | REL091901
Type:..... | Essential Oil
CAS Number:...
My Daily Choice

Client **mydaily choice** Website 

Primary **28.32% Limonene**
9.30% alpha-Pinene
8.22% Linalyl acetate



Result

Conclusion **This sample appears to fall within spec for the essential oil blend and within company standards for contamination testing.**
Internal Number: | EVS-3319



Essential Validation Services
747 SW 2nd Ave IMB 12 Suite 306
Gainesville, FL 32601
317.361.5044 | <https://essentialvalidationservices.com/>
adam@essentialvalidationservices.com
Adam Christen

| | | |
|-----------------|--------|--------|
| Monoterpenes | 45.65% | 45.65% |
| Sesquiterpenes | 5.46% | 5.46% |
| Monoterpenols | 17.11% | 17.11% |
| Sesquiterpenols | 1.36% | 1.36% |
| Ketones | 8.87% | 8.87% |
| Esters | 16.09% | 16.09% |
| Ethers | 2.83% | 2.83% |
| Aldehydes | 0.54% | 0.54% |
| Phenols | 0.00% | 0.00% |
| Other | 2.09% | 2.09% |

ESSENTIAL VALIDATION SERVICES | 747 SW 2ND AVE GAINESVILLE, FLORIDA 32601 | 317-361-5044