

Refractive Index: 1.4602 @ 25C
Density: 0.854 @ 23C

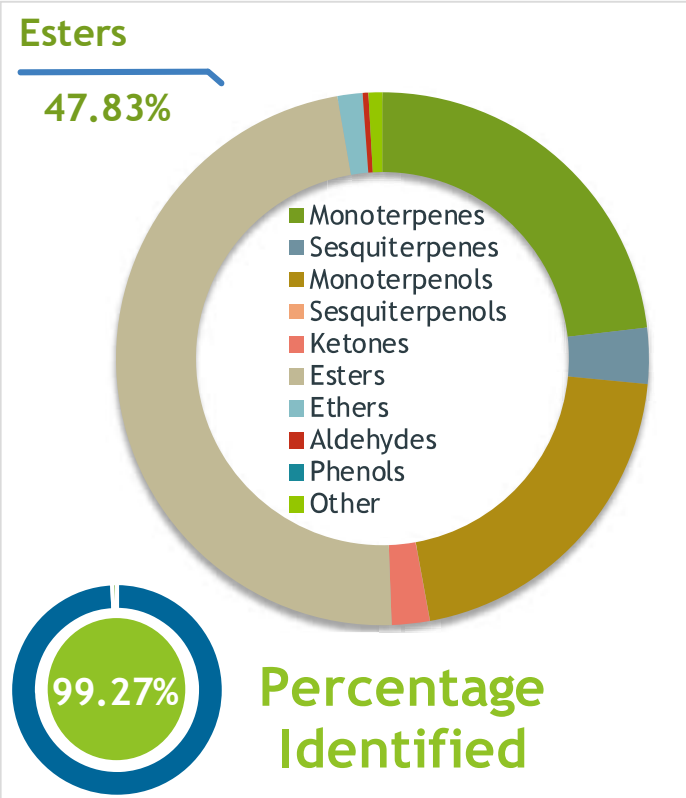
Sleep (Bergamot, Lavandin, Clary Sage, Roman chamomile, Valerianroot)
SLP091901

Client **mydaily choice** Source

Sample Sleep (Bergamot, Lavandin, Clary Batch #:..... SLP091901
Type:..... Essential Oil
CAS Number:.....
My Daily Choice

Client **mydaily choice** Website 

Primary **43.00%** | Linalyl acetate
18.90% | Linalool
13.82% | Limonene



Result

Conclusion **This sample appears to fall within spec for the essential oil blend and within company standards for contamination testing.**

Internal Number: | EVS-3317



Essential Validation Services
747 SW 2nd Ave IMB 12 Suite 306
Gainesville, FL 32601
317.361.5044 | <https://essentialvalidation.com/>
adam@essentialvalidation.com
Adam Christen

Monoterpenes	23.13%	23.13%
Sesquiterpenes	3.40%	3.40%
Monoterpenols	20.61%	20.61%
Sesquiterpenols	0.03%	0.03%
Ketones	2.29%	2.29%
Esters	47.83%	47.83%
Ethers	1.51%	1.51%
Aldehydes	0.36%	0.36%
Phenols	0.00%	0.00%
Other	0.84%	0.84%

ESSENTIAL VALIDATION SERVICES | 747 SW 2ND AVE GAINESVILLE, FLORIDA 32601 | 317-361-5044