

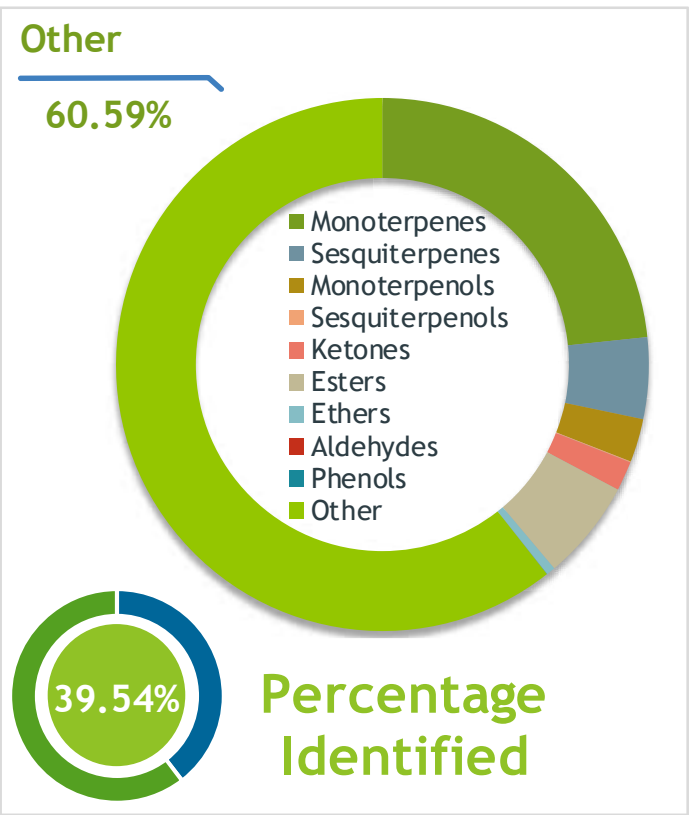
**Client**  **Source**

Energy (MCT, Spruce, Scots Pine, Peppermint, Atlas Cedar)  
-ENG091901

**Sample** Energy (MCT, Spruce, Scots Pine, Peppermint,  
Batch #:..... ENG091901  
Type:..... Essential Oil  
CAS Number:....  
**My Daily Choice**

**Client**  **Website** 

**Primary** **58.02%** | MCT Oil  
**8.68%** | alpha-Pinene  
**5.60%** | Bornyl acetate



**Result** 

**Conclusion** No adulterants, diluents, or contaminants were detected via this method. This oil meets the expected profile for genuine Essential Oil of Energy (MCT, Spruce, Scots Pine, Peppermint, Atlas Cedar)  
Internal Number: | EVS-3316

  
**Essential Validation Services**  
747 SW 2nd Ave IMB 12 Suite 306  
Gainesville, FL 32601  
317.361.5044 |  
<https://essentialvalidationservices.com/>  
adam@essentialvalidationservices.com  


Monoterpenes	23.34%	23.34%
Sesquiterpenes	4.94%	4.94%
Monoterpenols	2.64%	2.64%
Sesquiterpenols	0.06%	0.06%
Ketones	1.79%	1.79%
Esters	6.08%	6.08%
Ethers	0.55%	0.55%
Aldehydes	0.00%	0.00%
Phenols	0.01%	0.01%
Other	60.59%	60.59%

ESSENTIAL VALIDATION SERVICES | 747 SW 2<sup>ND</sup> AVE GAINESVILLE, FLORIDA 32601 | 317-361-5044

- Essential Oil testing is performed by using qualitative GC-MS. Method: SOP.T.01 Client Method  
- This report may not be published without the consent of Essential Validation Services.  
- Chromatograph image may be requested  
- This report is valid for 1 year from the analyzed date