

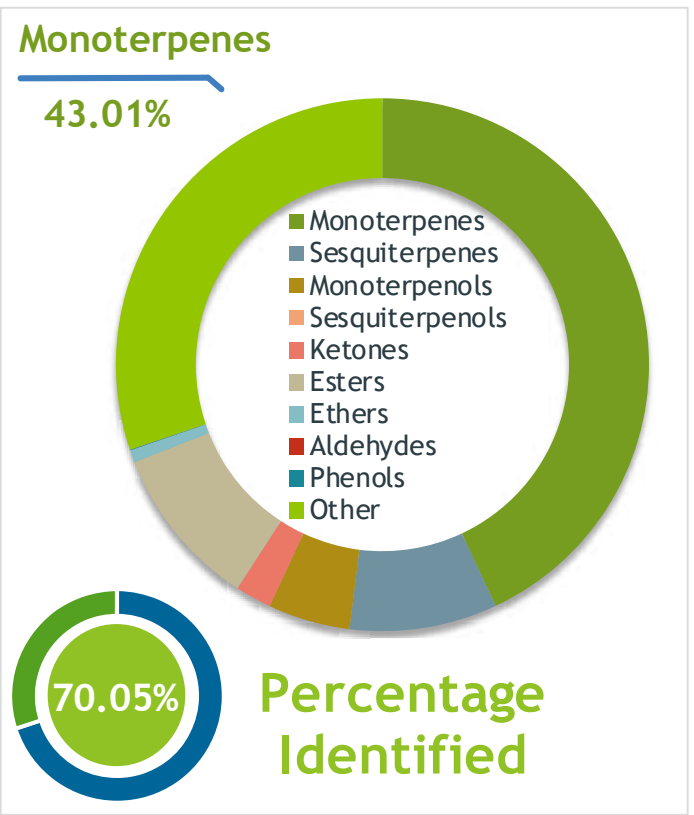
Client **mydaily choice** Source

Energy Blend
(Coconut, spruce, pine, peppermint, cedarwood)
ENG11190

Sample Energy Blend
Batch #:..... ENG11190
Type:..... Essential Oil Blend
CAS Number:.....
My Daily Choice

Client **mydaily choice** Website 

Primary **29.50%** Caprylic Triglyceride
16.60% alpha-Pinene
8.82% Bornyl acetate



Result **APPROVED**

Conclusion No adulterants, Diluents, or contaminants were detected via this method. This oil meets the expected profile for genuine Essential Oil Blend of Energy Blend (Coconut, spruce, pine, peppermint, cedarwood)
Internal Number: | EVS-3445


Essential Validation Services
747 SW 2nd Ave IMB 12 Suite 306
Gainesville, FL 32601
317.361.5044 |
<https://essentialvalidationservices.com/>
adam@essentialvalidationservices.com
Adam Christen

Monoterpenes	43.01%	43.01%
Sesquiterpenes	8.97%	8.97%
Monoterpenols	4.98%	4.98%
Sesquiterpenols	0.00%	0.00%
Ketones	2.21%	2.21%
Esters	9.87%	9.87%
Ethers	0.76%	0.76%
Aldehydes	0.00%	0.00%
Phenols	0.03%	0.03%
Other	30.17%	30.17%

ESSENTIAL VALIDATION SERVICES | 747 SW 2ND AVE GAINESVILLE, FLORIDA 32601 | 317-361-5044

- This report is the digitally signed and will only be considered valid if the signature is intact.
- This report may not be published without the consent of Essential Validation Services.
- Chromatograph image may be requested
- This report is valid for 1 year from the analyzed date