

Refractive Index: 1.4742 @ 25C
Density: 0.898 @ 23C

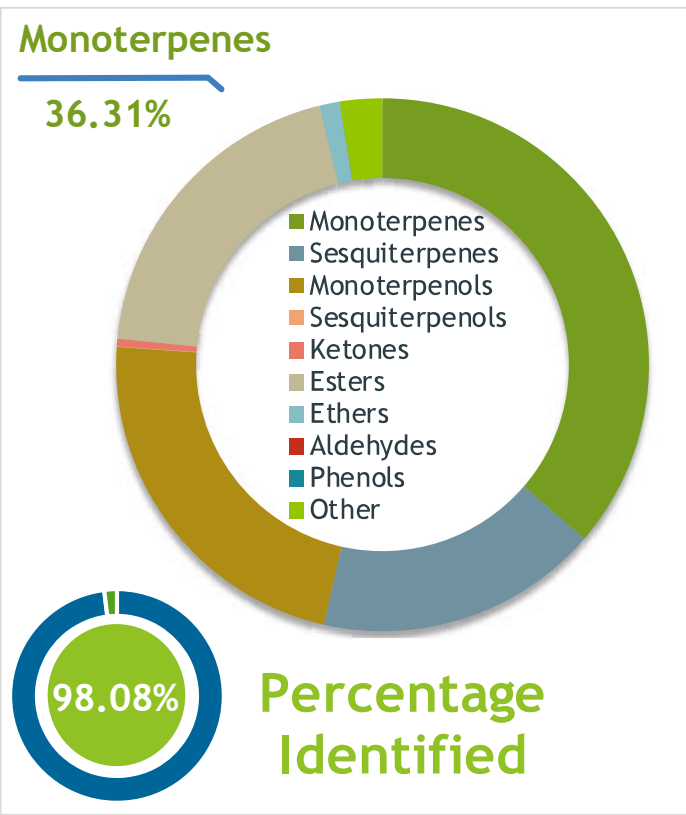
Restore (Hemp Seed, Lavender, Tea Tree, Frankincense, Helichrysum)
RES091901

Client  Source

Sample Restore (Hemp Seed, Lavender, Tea Tree)
Batch #:..... RES091901
Type:..... Essential Oil CAS
Number:... EVS-3318
My Daily Choice

Client  Website 

Primary **14.08%** alpha-Pinene
12.94% Terpinen-4-ol
10.73% Neryl acetate



Result 

Conclusion No adulterants, Diluents, or contaminants were detected via this method. This oil meets the expected profile for genuine Essential Oil of Restore (Hemp Seed, Lavender, Tea Tree, Frankincense, Helichrysum)
Internal Number: | EVS-3318



Essential Validation Services
747 SW 2nd Ave IMB 12 Suite 306
Gainesville, FL 32601
317.361.5044 | <https://essentialvalidationservices.com/>
adam@essentialvalidationservices.com
Adam Christen

Monoterpenes	36.31%	36.31%
Sesquiterpenes	17.23%	17.23%
Monoterpenols	22.52%	22.52%
Sesquiterpenols		0.04%
Ketones		0.45%
Esters	19.65%	19.65%
Ethers		1.22%
Aldehydes		0.00%
Phenols		0.01%
Other	2	2.57%

ESSENTIAL VALIDATION SERVICES | 747 SW 2ND AVE GAINESVILLE, FLORIDA 32601 | 317-361-5044