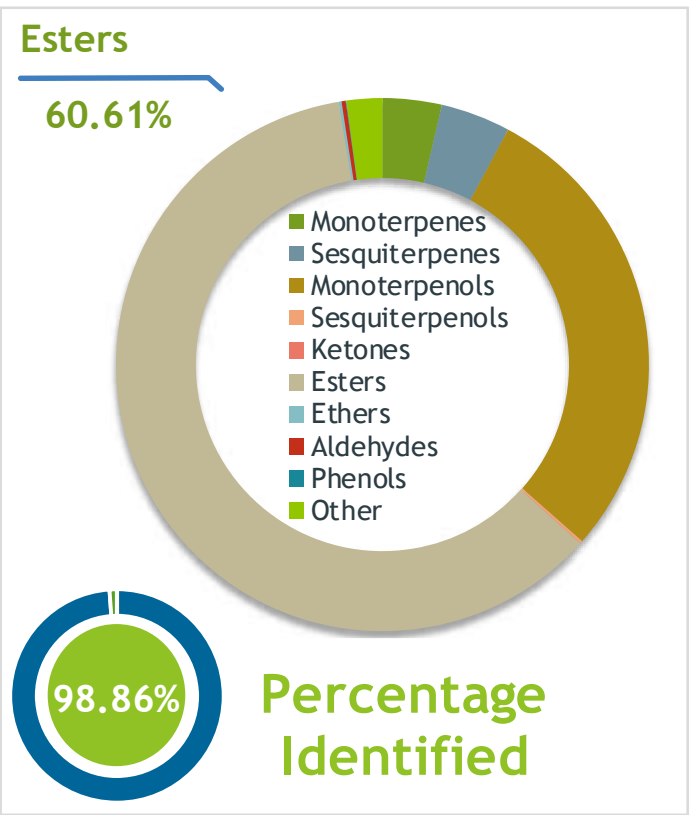


Client **mydaily choice** Source 

Clary Sage (*Salvia sclarea*)  
20114

Sample Clary Sage (*Salvia sclarea*)  
Batch #:..... 20114  
Type:..... Essential Oil  
CAS Number:... 8016-63-5  
**My Daily Choice**



Client **mydaily choice** Website 

Primary **55.82%** | Linalyl acetate  
**24.39%** | Linalool  
**3.58%** | alpha-Terpineol

Result **APPROVED**

Conclusion No adulterants, diluents, or contaminants were detected via this method. This oil meets the expected profile for genuine Essential Oil of Clary Sage (*Salvia sclarea*)  
Internal Number: | EVS-3786

  
**Essential Validation Services**  
747 SW 2nd Ave IMB 12 Suite 306  
Gainesville, FL 32601  
317.361.5044 | <https://essentialvalidationservices.com/>  
adam@essentialvalidationservices.com  
*Adam Christen*

|                 |        |
|-----------------|--------|
| Monoterpenes    | 3.58%  |
| Sesquiterpenes  | 4.24%  |
| Monoterpenols   | 28.68% |
| Sesquiterpenols | 0.16%  |
| Ketones         | 0.02%  |
| Esters          | 60.61% |
| Ethers          | 0.17%  |
| Aldehydes       | 0.26%  |
| Phenols         | 0.02%  |
| Other           | 2.18%  |

ESSENTIAL VALIDATION SERVICES | 747 SW 2<sup>ND</sup> AVE GAINESVILLE, FLORIDA 32601 | 317-361-5044

- Essential Oil testing is performed by using qualitative GC-MS. Method: SOP.T.01 Client Method  
- This report may not be published without the consent of Essential Validation Services.  
- Chromatograph image may be requested  
- This report is valid for 1 year from the analyzed date