

Client **mydaily choice** Source

Sample Restore (Hemp Seed, Lavender, Tea Tree, Frankincense, Helichrysum)
 Batch #:..... RES111901
 Type:..... Essential Oil Blend
 CAS Number:.....
My Daily Choice

Client **mydaily choice** Website 

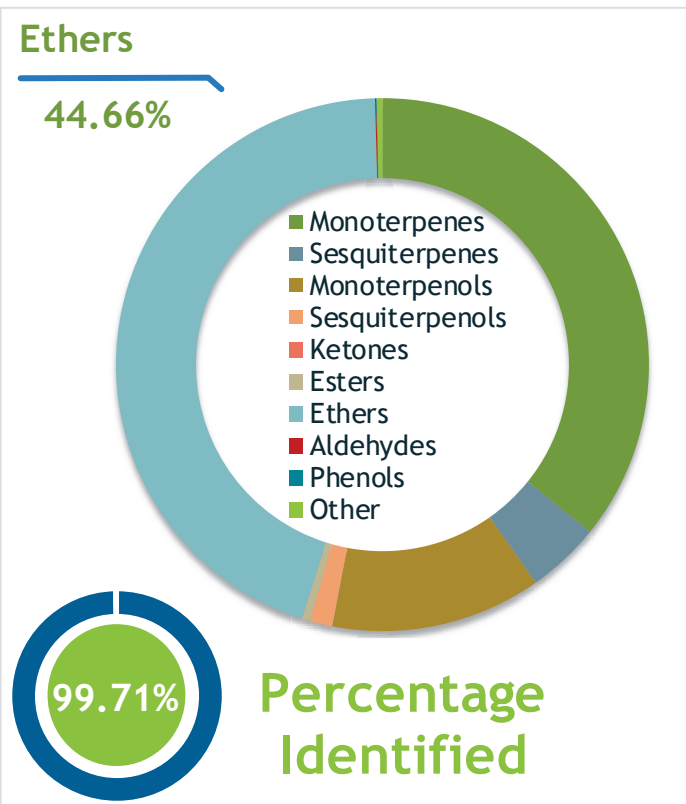
Primary **44.58%** | 1,8-Cineole
14.31% | alpha-Pinene
6.22% | alpha-Terpineol

Result **APPROVED**

Conclusion No adulterants, Diluents, or contaminants were detected via this method. This oil meets the expected profile for genuine Essential Oil Blend of Restore ()
 Internal Number: | EVS-3442


Essential Validation Services
 747 SW 2nd Ave IMB 12 Suite 306
 Gainesville, FL 32601
 317.361.5044 |
<https://essentialvalidationservices.com/>
 adam@essentialvalidationservices.com


Monoterpenes	35.79%	35.79%
Sesquiterpenes	4.46%	4.46%
Monoterpenols	12.78%	12.78%
Sesquiterpenols	1.35%	1.35%
Ketones	0.00%	0.00%
Esters	0.51%	0.51%
Ethers	44.66%	44.66%
Aldehydes	0.07%	0.07%
Phenols	0.04%	0.04%
Other	0.34%	0.34%



Restore (Hemp Seed, Lavender, Tea Tree, Frankincense, Helichrysum)

ESSENTIAL VALIDATION SERVICES | 747 SW 2ND AVE GAINESVILLE, FLORIDA 32601 | 317-361-5044

- This report is the digitally signed and will only be considered valid if the signature is intact.
 - This report may not be published without the consent of Essential Validation Services.
 - Chromatograph image may be requested
 - This report is valid for 1 year from the analyzed date