

Client



Source

Resilient ()
92001/ 8 ml

Sample

Resilient ()
Batch #:..... 92001/Lot Size 1200/ 8
Type:..... Fragrance Oil
Lot Size:..... 1200 Units

My Daily Choice

Client



Website

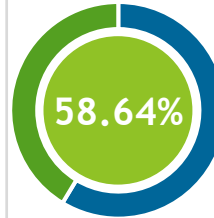
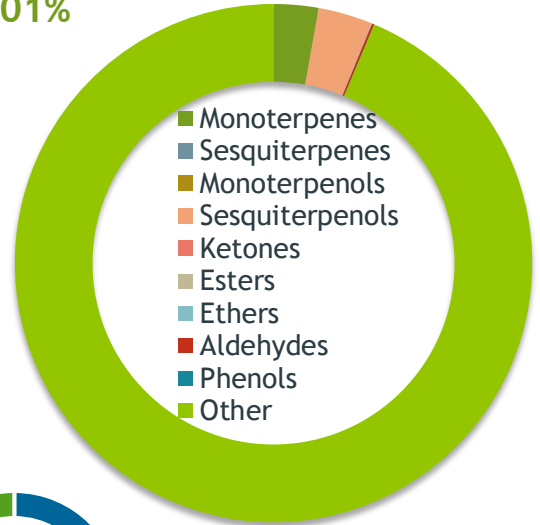


Primary

44.62% | Glycerol tricaprylate
7.30% | UK Compound
6.90% | 34.99 Methyl

Other

86.01%



Percentage Identified

Result



Conclusion

No adulterants, diluents, or contaminants were detected via this method. This oil meets the expected profile for genuine Fragrance Oil of Resilient ()

Internal Number: | EVS-3935



Essential Validation Services

747 SW 2nd Ave IMB 12 Suite 306
Gainesville, FL 32601

317.361.5044 |
<https://essentialvalidationservices.com/>

Alan Christian

Monoterpenes	2.57%
Sesquiterpenes	0.00%
Monoterpenols	0.00%
Sesquiterpenols	3.10%
Ketones	0.00%
Esters	0.05%
Ethers	0.00%
Aldehydes	0.13%
Phenols	0.00%
Other	86.01%