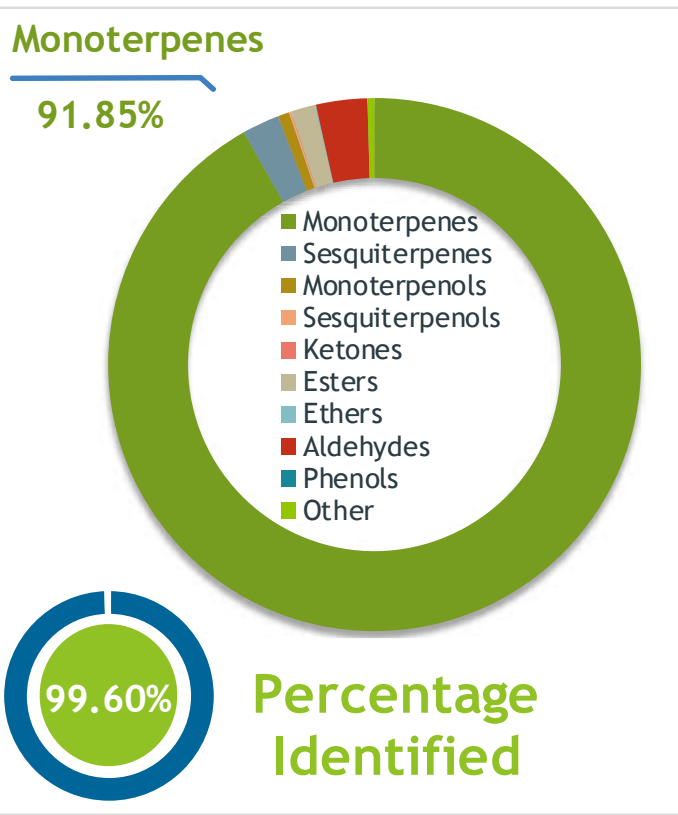


Client **mydaily choice** Source 

Lemon (*Citrus x limon*)
20114

Sample Lemon (*Citrus x limon*)
Batch #:..... 20114
Type:..... Essential Oil
CAS Number:... 8008-56-8
My Daily Choice



Client **mydaily choice** Website 

Primary **60.39% Limonene**
13.27% beta-Pinene
9.12% gamma-Terpinene

Result **APPROVED**

Conclusion No adulterants, diluents, or contaminants were detected via this method. This oil meets the expected profile for genuine Essential Oil of Lemon (*Citrus x limon*)
Internal Number: | EVS-3785



Essential Validation Services
747 SW 2nd Ave IMB 12 Suite 306
Gainesville, FL 32601
317.361.5044 | <https://essentialvalidationservices.com/>
adam@essentialvalidationservices.com
Adam Crutcher

Monoterpenes	91.85%	91.85%
Sesquiterpenes	2.26%	2.26%
Monoterpenols	0.69%	0.69%
Sesquiterpenols	0.11%	0.11%
Ketones	0.02%	0.02%
Esters	1.47%	1.47%
Ethers	0.06%	0.06%
Aldehydes	3.11%	3.11%
Phenols	0.00%	0.00%
Other	0.43%	0.43%

ESSENTIAL VALIDATION SERVICES | 747 SW 2ND AVE GAINESVILLE, FLORIDA 32601 | 317-361-5044

- Essential Oil testing is performed by using qualitative GC-MS. Method: SOP.T.01 Client Method
- This report may not be published without the consent of Essential Validation Services.
- Chromatograph image may be requested
- This report is valid for 1 year from the analyzed date