

Client



Source



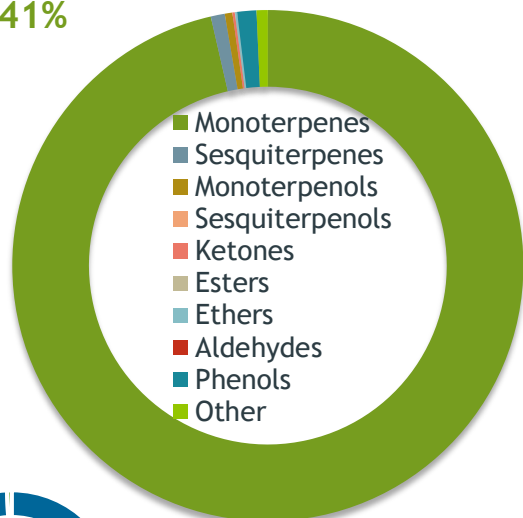
Frankincense (*Boswellia serrata*)  
Lot #21135

Sample

Frankincense (*Boswellia serrata*)  
Batch #:..... | Lot #21135  
Type:..... | Essential Oil  
CAS Number:... | 97952-72-2  
**My Daily Choice**

Monoterpenes

96.41%



Client



Website



Primary

**63.95%** | alpha-Thujene  
**7.18%** | Sabinene  
**6.56%** | alpha-Pinene



Percentage Identified

Result



Conclusion

No adulterants, diluents, or contaminants were detected via this method. This oil meets the expected profile for genuine Essential Oil of Frankincense (*Boswellia serrata*)

Internal Number: | EVS-4377



Essential Validation Services

747 SW 2nd Ave IMB 12 Suite 306  
Gainesville, FL 32601

317.361.5044 | <https://essentialvalidationservices.com/>

*Alan Christen*

Monoterpenes	96.41%	96.41%
Sesquiterpenes		0.89%
Monoterpenols		0.48%
Sesquiterpenols		0.00%
Ketones		0.15%
Esters		0.02%
Ethers		0.13%
Aldehydes		0.00%
Phenols		1.21%
Other		0.71%

ESSENTIAL VALIDATION SERVICES | 747 SW 2<sup>ND</sup> AVE GAINESVILLE, FLORIDA 32601 | 317-361-5044

Client

mydaily  
choice

Source

Frankincense (*Boswellia serrata*)

Lot #21135

Total Percentage		99.29%		
Number	RT	Area %	Compound Name	Chemical Family
1	7.22	0.01%	Bornylene	Monoterpene
2	7.67	0.09%	Hashishene	Monoterpene
3	8.00	63.95%	alpha-Thujene	Monoterpene
4	8.19	6.56%	alpha-Pinene	Monoterpene
5	8.78	0.10%	Camphene	Monoterpene
6	9.73	7.18%	Sabinene	Monoterpene
7	9.88	0.47%	beta-Pinene	Monoterpene
8	10.46	1.37%	Myrcene	Monoterpene
9	11.11	3.86%	alpha-Phellandrene	Monoterpene
10	11.22	5.50%	delta-3-Carene	Monoterpene
11	11.58	0.37%	alpha-Terpinene	Monoterpene
12	11.71	0.05%	o-Cymene	Monoterpene
13	11.91	1.45%	para-Cymene	Monoterpene
14	12.12	3.14%	Limonene	Monoterpene
15	12.50	0.73%	(Z)-beta-Ocimene	Monoterpene
16	12.95	0.37%	(E)-beta-Ocimene	Monoterpene
17	13.43	0.74%	gamma-Terpinene	Monoterpene
18	13.95	0.03%	trans-Sabinene hydrate	Monoterpenol
19	14.49	0.02%	Isoterpinolene	Monoterpene
20	14.65	0.31%	Terpinolene	Monoterpene
21	14.85	0.01%	para-Cymenene	Monoterpene
22	15.37	0.11%	Linalool	Monoterpenol
23	16.09	0.13%	alpha-Thujone	Monoterpene Ketone
24	16.67	0.13%	Alloocimene	Monoterpene
25	17.13	0.01%	cis-Sabinol	Monoterpenol
26	17.83	0.02%	Isomenthone	Monoterpene Ketone
27	18.17	0.02%	para-Mentha-1,5-dien-8-ol	Monoterpenol
28	18.50	0.02%	trans-Limonene oxide	Monoterpene Ether
29	18.88	0.02%	Menthol	Monoterpenol
30	18.98	0.27%	Terpinen-4-ol	Monoterpenol
31	19.67	0.02%	alpha-Terpineol	Monoterpenol
32	19.81	1.18%	Methyl chavicol	Phenylpropanoid
33	22.25	0.02%	Linalyl acetate	Monoterpene Ester
34	26.45	0.03%	delta-Elemene	Sesquiterpene
35	27.35	0.01%	alpha-Ylangene	Sesquiterpene

ESSENTIAL VALIDATION SERVICES | 747 SW 2<sup>ND</sup> AVE GAINESVILLE, FLORIDA 32601 | 317-361-5044

- Essential Oil testing is performed by using qualitative GC-MS. Method: SOP.T.01 Client Method  
 - This report may not be published without the consent of Essential Validation Services.  
 - Chromatograph image may be requested  
 - This report is valid for 1 year from the analyzed date



Frankincense (*Boswellia serrata*)  
Lot #21135

Number	RT	Area %	Compound Name	Chemical Family
36	27.63	0.09%	alpha-Copaene	Sesquiterpene
37	27.95	0.39%	beta-Bourbonene	Sesquiterpene
38	28.62	0.04%	Longifolene	Sesquiterpene
39	28.77	0.03%	Methyl eugenol	Phenylpropanoid
40	29.87	0.03%	beta-Copaene	Sesquiterpene
41	30.09	0.03%	cis-alpha-Bergamotene	Sesquiterpene
42	30.46	0.02%	beta-Copaene	Sesquiterpene
43	31.96	0.15%	Germacrene D	Sesquiterpene
44	32.02	0.10%	beta-Chamigrene	Sesquiterpene
45	33.84	0.11%	Kessane	Sesquiterpene Ether

ESSENTIAL VALIDATION SERVICES | 14 / NW 2<sup>ND</sup> AVE GAINESVILLE, FLORIDA 32601 | 352-381-3044

- Essential Oil testing is performed by using qualitative GC-MS. Method: SOP.T.01 Client Method  
- This report may not be published without the consent of Essential Validation Services.  
- Chromatograph image may be requested  
- This report is valid for 1 year from the analyzed date

