

Client



Source



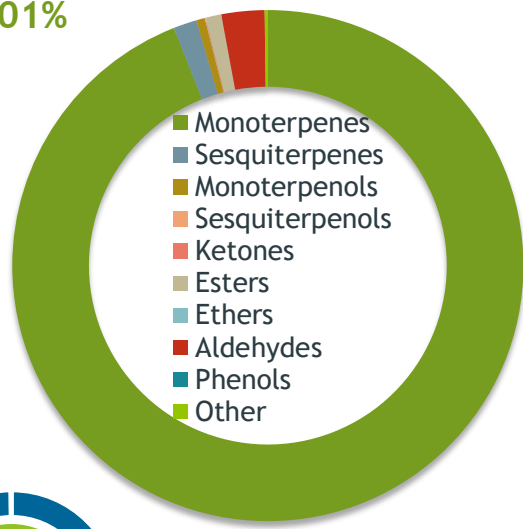
Lemon (*Citrus x limon*)
21075

Sample

Lemon (*Citrus x limon*)
Batch #:..... 21075
Type:..... Essential Oil
CAS Number:... 8008-56-8
My Daily Choice

Monoterpenes

94.01%



Client



Website



Primary

65.34% | Limonene
12.53% | beta-Pinene
8.77% | gamma-Terpinene



Percentage Identified

Result



Conclusion

No adulterants, diluents, or contaminants were detected via this method. This oil meets the expected profile for genuine Essential Oil of Lemon (*Citrus x limon*)

Internal Number: | EVS-4298



Essential Validation Services

747 SW 2nd Ave IMB 12 Suite 306
Gainesville, FL 32601

317.361.5044 | <https://essentialvalidationservices.com/>

Alan Christen

Monoterpenes	94.01%	94.01%
Sesquiterpenes		1.48%
Monoterpenols		0.53%
Sesquiterpenols		0.04%
Ketones		0.02%
Esters		1.00%
Ethers		0.00%
Aldehydes		2.72%
Phenols		0.00%
Other		0.20%

ESSENTIAL VALIDATION SERVICES | 747 SW 2ND AVE GAINESVILLE, FLORIDA 32601 | 317-361-5044

Client

mydaily
choice

Source

Lemon (*Citrus x limon*)

21075

Total Percentage		99.83%		
Number	RT	Area %	Compound Name	Chemical Family
1	7.76	0.01%	Tricyclene	Monoterpene
2	7.92	0.42%	alpha-Thujene	Monoterpene
3	8.17	1.90%	alpha-Pinene	Monoterpene
4	8.78	0.06%	Camphene	Monoterpene
5	9.74	2.27%	Sabinene	Monoterpene
6	9.92	12.53%	beta-Pinene	Monoterpene
7	10.29	0.01%	6-Methyl-5-hepten-2-one	Aliphatic Ketone
8	10.48	1.73%	Myrcene	Monoterpene
9	11.06	0.09%	Octanal	Aliphatic Aldehyde
10	11.12	0.03%	alpha-Phellandrene	Monoterpene
11	11.60	0.20%	alpha-Terpinene	Monoterpene
12	11.95	0.24%	para-Cymene	Monoterpene
13	12.28	65.34%	Limonene	Monoterpene
14	12.52	0.04%	(Z)-beta-Ocimene	Monoterpene
15	12.98	0.10%	(E)-beta-Ocimene	Monoterpene
16	13.48	8.77%	gamma-Terpinene	Monoterpene
17	13.96	0.04%	trans-Sabinene hydrate	Monoterpenol
18	14.66	0.37%	Terpinolene	Monoterpene
19	15.38	0.15%	Linalool	Monoterpenol
20	15.61	0.13%	Nonanal	Aliphatic Aldehyde
21	17.38	0.01%	Camphor	Monoterpene Ketone
22	17.78	0.07%	Citronellal	Monoterpene Aldehyde
23	18.99	0.04%	Terpinen-4-ol	Monoterpenol
24	19.07	0.01%	(E)-Isocitral	Monoterpene Aldehyde
25	19.68	0.24%	alpha-Terpineol	Monoterpenol
26	20.28	0.05%	Decanal	Aliphatic Aldehyde
27	21.09	0.03%	Nerol	Monoterpenol
28	21.67	0.84%	Neral	Monoterpene Aldehyde
29	22.30	0.03%	Geraniol	Monoterpenol
30	23.03	1.47%	Geranial	Monoterpene Aldehyde
31	23.24	0.03%	Perilla aldehyde	Monoterpene Aldehyde
32	24.85	0.03%	Undecanal	Sesquiterpene Aldehyde
33	25.80	0.02%	delta-Elemene	Sesquiterpene
34	26.68	0.03%	Citronellyl acetate	Monoterpene Ester
35	27.06	0.67%	Neryl acetate	Monoterpene Ester

ESSENTIAL VALIDATION SERVICES | 747 SW 2ND AVE GAINESVILLE, FLORIDA 32601 | 317-361-5044

- Essential Oil testing is performed by using qualitative GC-MS. Method: SOP.T.01 Client Method
 - This report may not be published without the consent of Essential Validation Services.
 - Chromatograph image may be requested
 - This report is valid for 1 year from the analyzed date

Client



Source



Lemon (*Citrus x limon*)
21075

Number	RT	Area %	Compound Name	Chemical Family
36	27.898	0.30%	Geranyl acetate	Monoterpene Ester
37	28.90	0.02%	Tetradecane	Alkane
38	29.28	0.02%	cis-alpha-Bergamotene	Sesquiterpene
39	29.44	0.22%	cis-Caryophyllene	Sesquiterpene
40	30.11	0.41%	trans-alpha-Bergamotene	Sesquiterpene
41	30.23	0.02%	beta-Caryophyllene	Sesquiterpene
42	30.91	0.01%	alpha-Humulene	Sesquiterpene
43	31.00	0.03%	(E)-beta-Farnesene	Sesquiterpene
44	31.16	0.01%	beta-Santalene	Sesquiterpene
45	32.45	0.01%	Valencene	Sesquiterpene
46	32.57	0.04%	Bicyclogermacrene	Sesquiterpene
47	32.90	0.04%	cis-alpha-Bisabolene	Sesquiterpene
48	33.01	0.01%	Pentadecane	Alkane
49	33.17	0.64%	beta-Bisabolene	Sesquiterpene
50	34.46	0.01%	trans-alpha-Bisabolene	Sesquiterpene
51	35.73	0.01%	Germacrene D-4-ol	Sesquiterpenol
52	39.96	0.03%	epi-alpha-Bisabolol	Sesquiterpenol

ESSENTIAL VALIDATION SERVICES | 14 SW 2nd AVE GAINESVILLE, FLORIDA 32601 | 352-351-5044

- Essential Oil testing is performed by using qualitative GC-MS. Method: SOP.T.01 Client Method
 - This report may not be published without the consent of Essential Validation Services.
 - Chromatograph image may be requested
 - This report is valid for 1 year from the analyzed date



Lemon (*Citrus x limon*)
21075

ESSENTIAL VALIDATION SERVICES | 14 / SW 2nd AVE GAINESVILLE, FLORIDA 32601 | 31 / -351-5044

- Essential Oil testing is performed by using qualitative GC-MS. Method: SOP.T.01 Client Method
- This report may not be published without the consent of Essential Validation Services.
- Chromatograph image may be requested
- This report is valid for 1 year from the analyzed date