

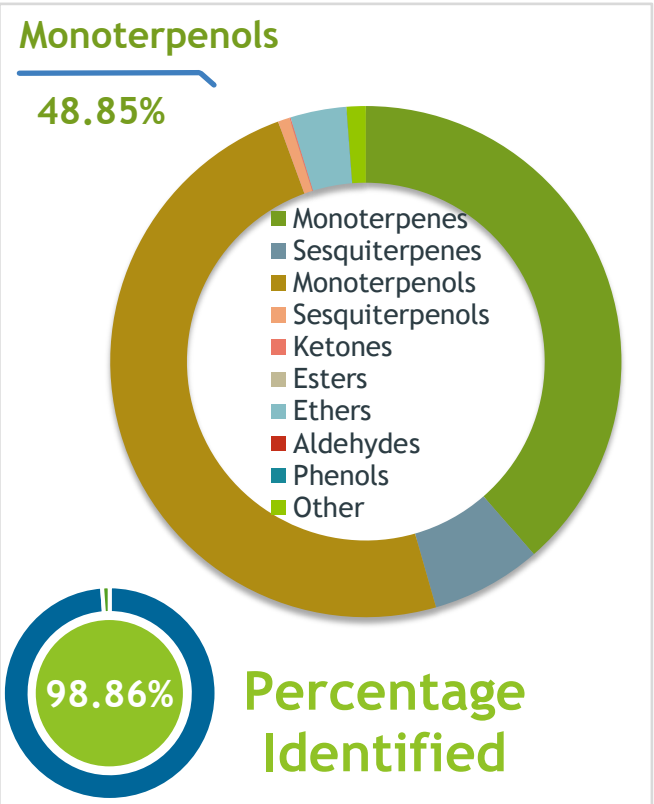
Client **mydaily choice** Source 

Tea Tree (*Melaleuca alternifolia*)
Lot #21132

Sample Tea Tree (*Melaleuca alternifolia*)
Batch #:..... Lot #21132
Type:..... Essential Oil
CAS Number:... 68647-73-4
My Daily Choice

Client **mydaily choice** Website 

Primary **44.36%** Terpinen-4-ol
17.27% gamma-Terpinene
9.04% alpha-Terpinene



Result **APPROVED**

Conclusion No adulterants, diluents, or contaminants were detected via this method. This oil meets the expected profile for genuine Essential Oil of Tea Tree (*Melaleuca alternifolia*)
Internal Number: | EVS-4374


Essential Validation Services
747 SW 2nd Ave IMB 12 Suite 306
Gainesville, FL 32601
317.361.5044 |
<https://essentialvalidationservices.com/>
Alan Christen

Monoterpenes	38.58%	38.58%
Sesquiterpenes	6.99%	6.99%
Monoterpenols	48.85%	48.85%
Sesquiterpenols	0.74%	0.74%
Ketones	0.08%	0.08%
Esters	0.00%	0.00%
Ethers	3.54%	3.54%
Aldehydes	0.00%	0.00%
Phenols	0.01%	0.01%
Other	1.21%	1.21%

ESSENTIAL VALIDATION SERVICES | 747 SW 2ND AVE GAINESVILLE, FLORIDA 32601 | 317-361-5044

- Essential Oil testing is performed by using qualitative GC-MS. Method: SOP.T.01 Client Method
- This report may not be published without the consent of Essential Validation Services.
- Chromatograph image may be requested
- This report is valid for 1 year from the analyzed date

Client

mydaily
choice

Source

Tea Tree (*Melaleuca alternifolia*)

Lot #21132

Total Percentage		98.86%		
Number	RT	Area %	Compound Name	Chemical Family
1	5.61	0.07%	cis-Hex-3-en-1-ol	Aliphatic Alcohol
2	7.91	0.91%	alpha-Thujene	Monoterpene
3	8.16	2.21%	alpha-Pinene	Monoterpene
4	9.71	0.54%	Sabinene	Monoterpene
5	9.88	0.70%	beta-Pinene	Monoterpene
6	10.46	0.88%	Myrcene	Monoterpene
7	11.11	0.52%	alpha-Phellandrene	Monoterpene
8	11.61	9.04%	alpha-Terpinene	Monoterpene
9	11.92	1.77%	para-Cymene	Monoterpene
10	12.15	1.57%	Limonene	Monoterpene
11	12.22	3.54%	1,8-Cineole	Monoterpene Ether
12	12.96	0.02%	(Z)-beta-Ocimene	Monoterpene
13	13.50	17.27%	gamma-Terpinene	Monoterpene
14	13.95	0.05%	trans-Sabinene hydrate	Monoterpenol
15	14.67	3.10%	Terpinolene	Monoterpene
16	14.86	0.05%	para-Cymenene	Monoterpene
17	15.36	0.16%	cis-Sabinene hydrate	Monoterpenol
18	16.42	0.32%	cis-para-Menth-2-en-1-ol	Monoterpenol
19	17.27	0.23%	trans-para-Menth-2-en-1-ol	Monoterpenol
20	17.84	0.03%	Menthone	Monoterpene Ketone
21	19.20	44.36%	Terpinen-4-ol	Monoterpenol
22	19.34	0.07%	para-Cymen-8-ol	Monoterpenol
23	19.73	3.52%	alpha-Terpineol	Monoterpenol
24	20.34	0.12%	trans-Piperitol	Monoterpenol
25	21.09	0.02%	Nerol	Monoterpenol
26	22.28	0.05%	Piperitone	Monoterpene Ketone
27	25.79	0.39%	delta-Elemene	Sesquiterpene
28	26.44	0.07%	alpha-Cubebene	Sesquiterpene
29	27.43	0.05%	Isoledene	Sesquiterpene
30	27.64	0.15%	alpha-Copaene	Sesquiterpene
31	28.25	0.04%	beta-Elemene	Sesquiterpene
32	28.77	0.01%	Methyl eugenol	Phenylpropanoid
33	28.95	0.29%	alpha-Gurjunene	Sesquiterpene
34	29.43	0.40%	beta-Caryophyllene	Sesquiterpene
35	29.75	0.05%	Longifolene	Sesquiterpene

Client

mydaily
choice

Source



Tea Tree (*Melaleuca alternifolia*)
Lot #21132

Number	RT	Area %	Compound Name	Chemical Family
36	29.878	0.01%	beta-Gurjunene	Sesquiterpene
37	30.21	1.09%	Aromadendrene	Sesquiterpene
38	30.66	0.16%	trans-Muuroala-3,5-diene	Sesquiterpene
39	30.90	0.11%	alpha-Humulene	Sesquiterpene
40	31.09	0.48%	allo-Aromadendrene	Sesquiterpene
41	31.63	0.34%	trans-Cadina-1(6),4-diene	Sesquiterpene
42	31.76	0.03%	gamma-Muurolene	Sesquiterpene
43	32.26	0.27%	alpha-Selinene	Sesquiterpene
44	32.40	0.92%	Viridiflorene	Sesquiterpene
45	32.56	0.77%	Bicyclogermacrene	Sesquiterpene
46	32.74	0.12%	alpha-Muurolene	Sesquiterpene
47	33.27	0.01%	gamma-Cadinene	Sesquiterpene
48	33.53	1.06%	beta-Cadinene	Sesquiterpene
49	34.04	0.18%	trans-Cadina-1,4-diene	Sesquiterpene
50	35.15	0.08%	Maaliol	Sesquiterpenol
51	35.43	0.05%	Palustrol	Sesquiterpenol
52	35.70	0.04%	Spathulenol	Sesquiterpenol
53	36.17	0.02%	Gleenol	Sesquiterpenol
54	36.36	0.12%	Globulol	Sesquiterpenol
55	36.75	0.03%	Ledol	Sesquiterpenol
56	36.85	0.06%	Rosifoliol	Sesquiterpenol
57	37.52	0.09%	Guaiol	Sesquiterpenol
58	37.67	0.15%	1,10-di-epi-Cubenol	Sesquiterpenol
59	38.23	0.08%	1-epi-Cubenol	Sesquiterpenol
60	38.38	0.02%	alpha-Muurolol	Sesquiterpenol

ESSENTIAL VALIDATION SERVICES | 14 SW 2ND AVE GAINESVILLE, FLORIDA 32601 | 352-350-5044

Client



Source



Tea Tree (*Melaleuca alternifolia*)
Lot #21132
